

2015 WORLD CLUB CHAMPIONSHIP SHORE ANGLING

7-14 NOVEMBER 2015 - LANGEBAAN - SOUTH AFRICA



**South African Shore Angling Association  
have the honor to invite you to participate  
in the  
23<sup>rd</sup> World SHORE ANGLING CLUBS  
Championship in Langebaan  
South Africa**

**7<sup>th</sup> to 14<sup>th</sup> November 2015**





*Message from Minister Anroux Marais*  
*2015 World Shore Angling Clubs Championships*

It gives me great pleasure to welcome all participants, both local and international, to the 23<sup>rd</sup> World Shore Angling Clubs Championship in the picturesque Langebaan in our beautiful Western Cape.

The World Shore Angling Clubs Championships undoubtedly makes a meaningful contribution to the Western Cape Department of Cultural Affairs and Sport's mission to encourage excellence and inclusiveness in sport and culture through the effective, efficient and sustainable use of our resources, and through creative partnerships with others. In moving to excellence, we will create the conditions for access and mass participation, talent identification and skills development.

Sporting events such as the World Shore Angling Clubs Championship enable a socially inclusive, creative, active and connected Western Cape. It also affords visitors the opportunity to witness first-hand the splendor the Western Cape has to offer, while creating lifelong friendships with a healthy dose of competition.

I encourage participants to enjoy the championship, wish them well in their preparations for the week and continued prosperity in being the positive role models to the youth as they lead their healthy lifestyles while increasing wellness.

**Anroux Marais, Western Cape Minister of Cultural Affairs and Sport**





*Message from the Executive Mayor*

*2015 World Shore Angling Clubs Championships*

Executive Mayor's Welcome Message: Alderman Francois Schippers  
23rd World Club Shore Angling Championships: 8 November 2015

It is a great pleasure to welcome all participants, their families and friends to the 23<sup>rd</sup> World Shore Angling Championships. I also want to extend a special warm welcome to those who have travelled from abroad.

Langebaan is proud to support this event, recognizing the importance of angling tourism and welcoming anglers specifically to Langebaan, and generally to all of what the town and region has to offer.

Events like these are not only a great source of community pride; they also bring social and economic benefits to the host community. All of you have made many friendships over the years, because of your common goals, and as a result we look forward to the many social and angling opportunities in the days ahead.

We hope for excellent weather conditions, wind, tide and sportsmanship's. There is a saying: When is the best time to fish? And the answer is: "Anytime you can get on the water."

I would like to thank the participants, local community, sponsors and event organizers for their terrific efforts in bringing a great angling event to Langebaan and to South Africa.

F.J. Schippers





*Welcome by the President of the  
South African Shore Angling Association*

Dear angling friends,

It is with great pleasure that we invite, on behalf of the South African Shore Angling Association, your national Federation / Association Clubs to participate in the 23rd World SHORE ANGLING CLUBS CHAMPIONSHIP to take place in Langebaan, South Africa, 7th – 14th November 2015.

We are honoured that C.I.P.S. and FIPS-M have granted South Africa, and the village of Langebaan the opportunity and trust to host the world's best sport sea anglers. We glad fully accept the challenge to present the most memorable tournament your Nation will have ever experienced. Our angling is the **BEST** in the world.

South Africa is the Rainbow nation of the world due to our various cultures and we invite you to share our hospitality and natural beauty.

May these championships take place in the true sporting competitive spirit, sporting cooperation and friendship among our sportsmen, Angling Clubs and people.

We trust that accept for angling everyone will benefit and gain lifelong friendships.

**WELCOME!**

Pierre du Preez – President





*Welcome by the Vice President of the  
South African Shore Angling Association*

Dearest friends,

Words fail to describe not only the honor that we feel by having been granted the opportunity to host this prestigious tournament, but the excitement that we feel in awaiting your arrival.

Down here in the South, we get withdrawal symptoms when we do not see our angling friends on a regular basis. And if we haven't met yet, know that we are here waiting to welcome you to our beautiful country.

We wish you safe travels, good fishing and a celebration of friendship.

Tish Yelland – Vice President





## WELCOME TO LANGEBAAN

Although Langebaan is well known as a coastal resort, it is on the shores of a lagoon which flows from the sea. - one of South Africa's greatest natural wonders. The bright blue, sheltered stretch of water stretches south for 17 km from Saldanha Bay in the north, past Langebaan village to Geelbek at the southern end. It is 4 km wide in places. Langebaan village is in the heart of the West Coast region, 140 km from Cape Town. Langebaan is especially valued for its peaceful and beautiful surroundings. It is a favorite destination all the year round for visitors and water sports enthusiasts, who enjoy the fine angling, diving, swimming and sailing to be found here.

This picturesque town developed quickly from a quiet fishing village into a holidaymaker's paradise and today it is one of the most popular holiday resorts on the West Coast.

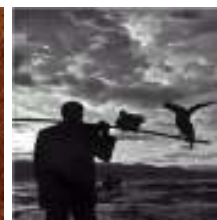
As the flowers from Postberg, through the West Coast National Park and all over the West Coast, form a tapestry of color and shape, so have the different people and nationalities formed a colorful tapestry. Churchaven, on the opposite side of the lagoon, is a wonderful example of where the past, present and future have merged into an atmosphere of timelessness.

The town originated on a farm called De Stompe Hoek that was first called Geytenbergsfontein. Langebaan is one of the oldest towns in South Africa with a history dating back more than 400 years. It has an archaeological history of a few million years. Twelve kilometers east of the farm Elandsfontein, a fossilized skeleton was found that dates back to the Stone Age. This fossil deposit is considered to be one of the richest in the world.

Seal hunters from France frequented the area long before the time of Jan van Riebeeck. They used Schaapen Island as their head quarters and for storage of Seal skins and whale oil. This island which is close to the beach was called: "Isle à la Biche" at the time and the name was only changed back to the original about a century ago.

Schaapen Island was also used as a stop over to do repairs to ships. It was also used as a place of grazing for sheep that were then returned to Cape Town by the VOC.

Leentjies klip, where we find a caravan park today, got its name from a Mr. Lynch, who absconded from his ship in the area. "Lynch se klip" soon became known as "Leentiesklip", a name still used today.







Donkergat was used as a quarantine camp. In later years two fishing companies were established here: Donkergat in 1909 by John Bryde and Salamanderbaai in 1910 by Carl Ellefson.

The P.O.S.I., an oyster shell factory, was founded in 1918 where the Yacht Club is today. Remains of the original building forms part of the building where the bar is today.

Langebaan has a colorful history with many old historic buildings. "Oom Rijk Melck" (78) will gladly show you the places where they played as kids. His house, "Greystone", is one of the oldest buildings in Langebaan. As you enter the town, you will find a restaurant called "Tolhuis". This house got it's name because there was a gate in the road next to the house. The children would run to open it for visitors and received a penny for their trouble. As a result, the house earned it's name.

For more information:

[www.capewestcoastpeninsula.co.za](http://www.capewestcoastpeninsula.co.za)

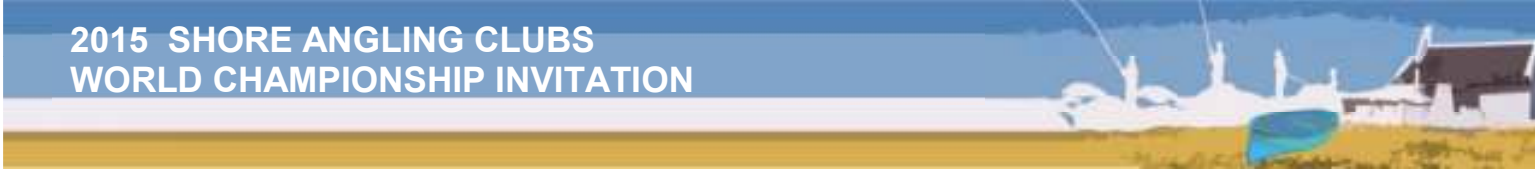
[www.langebaanestate.co.za](http://www.langebaanestate.co.za)

[www.sasaa.co.za](http://www.sasaa.co.za)

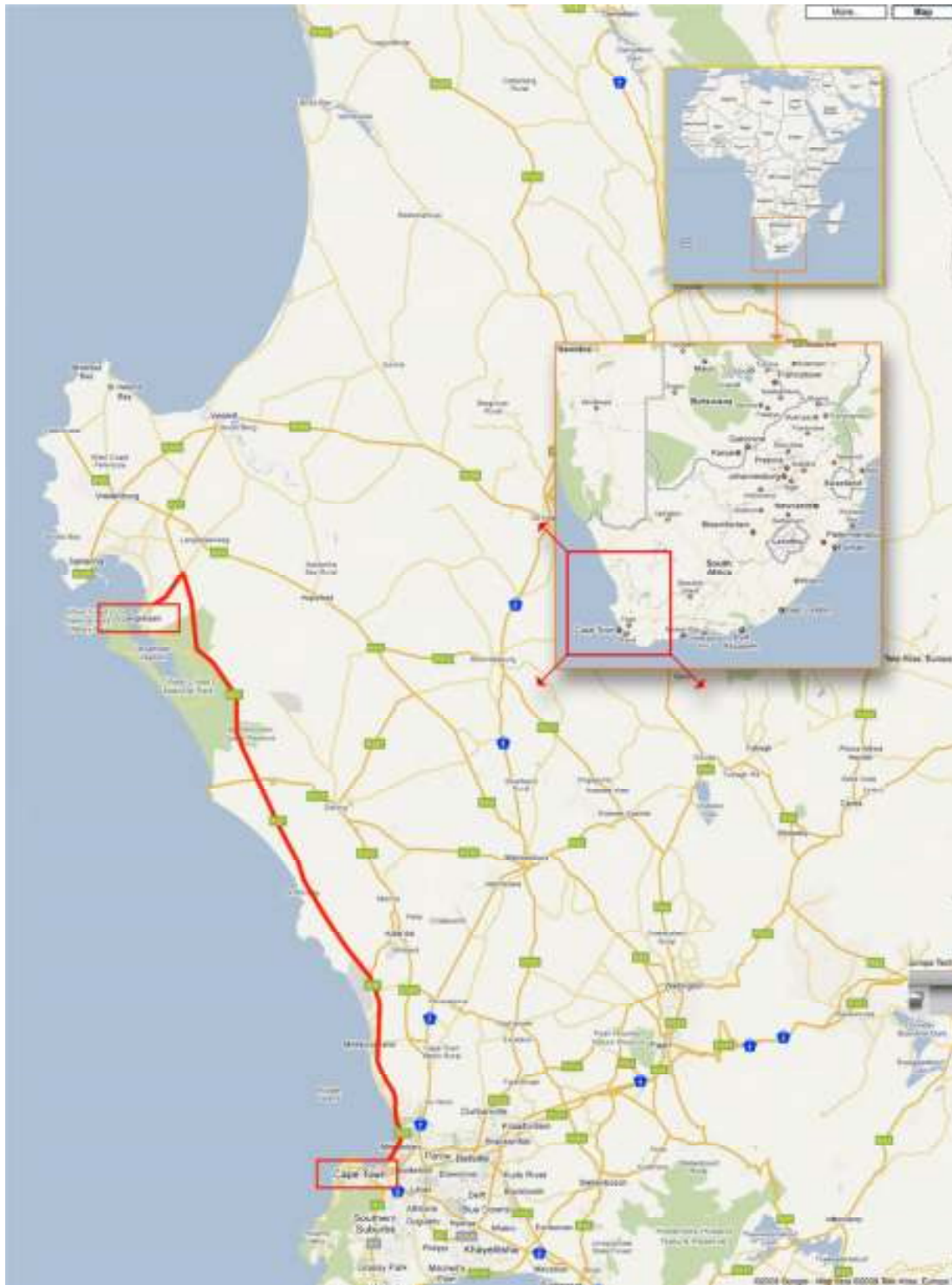
[www.clubmykonos.co.za](http://www.clubmykonos.co.za)

[www.southafrica.net](http://www.southafrica.net)





## WHERE IS SOUTH AFRICA AND LANGEBAAN?







## 2015 SHORE ANGLING CLUBS WORLD CHAMPIONSHIP PROGRAMME

**NOTE:** Venue for dinners, breakfasts, lunches and all functions will be communicated well in advance.

**Important Notice:** All team participants, managers and captains must report to the Information Office on arrival.

### Saturday, 7th November

- 15.00h - Final arrival of participants, accommodation at Langebaan Golf Estate.  
[www.langebaanestate.co.za](http://www.langebaanestate.co.za)
- 18.00h - Buses depart to Klipzaam, for dinner  
Visit <https://www.facebook.com/klipzaamvenue.klipzaamvenue>
- 19.00h - 19.10h Culture show: Gumboots dancers (if available)
- 19.10h - 19.30h Culture show: Kaapse Kloppse (if available)
- 19.30h - 21.00h Dinner, Traditional braai.
- 21.00h – 22.00h Buses will depart back to accommodation

### Sunday, 8th November

- 07.00h - 08.45h Breakfast
- 09.00h Meeting between the Directorate and team captains  
Drawing of fishing sectors for all days of competition
- 12.30h Joint press conference with team captains / managers
- 13.00h – 14.15h Lunch
- 15.30h Buses depart for Street parade. Preparations for the official opening ceremony
- 16.00h - 16.20h Street parade

### 16.30h - **OPENING CEREMONY**

- ▶ National anthems and hoisting of national flags
- ▶ Addresses by various dignitaries, FIPS-M Official, President and Vice President of South African Shore Angling Association
- ▶ Mixing of all International waters  
Teams and guests Ushered to tables

- 17.30h – 18.30h Mingle with fellow anglers and enjoy refreshments
- 18.30h - 19.30h Dinner starter / hor dourves
- 19.45h - 20.45h Dinner
- 21.15h Buses depart for accommodation



# 2015 SHORE ANGLING CLUBS WORLD CHAMPIONSHIP INVITATION



## **PRACTICE DAY**      **Monday, 9th November**

|                 |  |
|-----------------|--|
| 05.45h -        | Buses depart for breakfast<br>Competitors must load fishing equipment on bus |
| 06.00h - 07.00h | Breakfast. (Note), Lunch packs will be delivered to fishing venue            |
| 07.30h          | Roll call & Bait issue<br>Buses depart to fishing venue                      |
| 08.15h          | Buses arrive at fishing venue  |
| 08.30h          | Competitors to proceed to sectors  |
| 10.00h          | Start of OFFICIAL TRAINING   |
| 14.00h          | End of Training. Buses return to accommodation                               |
| 15.00h          | Conversion of fish measurement to weight<br>Captains meeting if required     |
| 18.30h          | Announcement of results of official training to team captains                |
| 18.45h          | Bus depart for dinner  |
| 19.00h          | Last bus departs for dinner  |
| 19.00h - 21.00h | Dinner   |
| 21.00h          | Last bus departs to accommodation  |

## **DAY 1**      **Tuesday, 10th November**

|                 |  |
|-----------------|--|
| 05.45h -        | Buses depart for breakfast<br>Competitors must load fishing equipment on bus |
| 06.00h - 07.00h | Breakfast. (Note), Lunch packs will be delivered to fishing venue            |
| 07.30h          | Roll call & Bait issue<br>Buses depart to fishing venue                      |
| 08.15h          | Buses arrive at fishing venue  |
| 08.30h          | Competitors to proceed to sectors  |
| 10.00h          | Start of DAY 1   |
| 14.00h          | End of Training. Buses return to accommodation                               |
| 15.00h          | Conversion of fish measurement to weight<br>Captains meeting if required     |
| 18.30h          | Announcement of results of DAY 1 to team captains                            |
| 18.45h          | Bus depart for dinner  |
| 19.00h          | Last bus departs for dinner  |
| 19.00h - 21.00h | Dinner   |
| 21.00h          | Last bus departs to accommodation  |

# 2015 SHORE ANGLING CLUBS WORLD CHAMPIONSHIP INVITATION



## DAY 2

**Wednesday, 11th November**

|                 |  |
|-----------------|--|
| 05.45h -        | Buses depart for breakfast<br>Competitors must load fishing equipment on bus |
| 06.00h - 07.00h | Breakfast. (Note), Lunch packs will be delivered to fishing venue            |
| 07.30h          | Roll call & Bait issue<br>Buses depart to fishing venue                      |
| 08.15h          | Buses arrive at fishing venue  |
| 08.30h          | Competitors to proceed to sectors  |
| 10.00h          | Start of DAY 2   |
| 14.00h          | End of Training. Buses return to accommodation                               |
| 15.00h          | Conversion of fish measurement to weight<br>Captains meeting if required     |
| 18.30h          | Announcement of results of DAY 2 to team captains                            |
| 18.45h          | Bus depart for dinner  |
| 19.00h          | Last bus departs for dinner  |
| 19.00h - 21.00h | Dinner   |
| 21.00h          | Last bus departs to accommodation  |

## DAY 3

**Thursday, 12th November**

|                 |  |
|-----------------|--|
| 05.45h -        | Buses depart for breakfast<br>Competitors must load fishing equipment on bus |
| 06.00h - 07.00h | Breakfast. (Note), Lunch packs will be delivered to fishing venue            |
| 07.30h          | Roll call & Bait issue<br>Buses depart to fishing venue                      |
| 08.15h          | Buses arrive at fishing venue  |
| 08.30h          | Competitors to proceed to sectors  |
| 10.00h          | Start of DAY 3   |
| 14.00h          | End of Training. Buses return to accommodation                               |
| 15.00h          | Conversion of fish measurement to weight<br>Captains meeting if required     |
| 18.30h          | Announcement of results of DAY 3 to team captains                            |
| 18.45h          | Bus depart for dinner  |
| 19.00h          | Last bus departs for dinner  |
| 19.00h - 21.00h | Dinner   |
| 21.00h          | Last bus departs to accommodation  |





**DAY 4**

**Friday 13th November**

|                 |  |
|-----------------|--|
| 05.15h -        | Buses depart for breakfast<br>Competitors must load fishing equipment on bus   |
| 05.30h - 06.30h | Breakfast. (Note), Lunch packs will be delivered to fishing venue  |
| 06.45h          | Roll call & Bait issue<br>Buses depart to fishing venue  |
| 07.30h          | Buses arrive at fishing venue  |
| 07.45h          | Competitors to proceed to sectors  |
| 09.00h          | Start of Competition Day 4   |
| 13.00h          | End of Match. Buses return to accommodation  |
| 14.00h          | Conversion of fish measurement to weight   |
| 18.40h          | Buses depart for <b>GALA DINNER</b> at "Klipzaam"<br>Visit <a href="https://www.facebook.com/klipzaamvenue.klipzaamvenue">https://www.facebook.com/klipzaamvenue.klipzaamvenue</a> |
| 19.00h          | Teams and Guests ushered to tables   |
| 19.15h - 21.15h | Dinner - Proclamation of winners and presentation of awards  |
| 23.00h          | Buses depart to accommodation  |

**Saturday 14th November**

|          |  |
|----------|--|
| 07.30h - | Breakfast<br>Departure of participants |
|----------|--|

You will be informed well in advance if this proposed programme changes



**LANGEBAAN COUNTRY ESTATE RULES**

Here are a few 'housekeeping' matters we would like to bring to your attention;

1. A Lodge or Suite must be vacated (keys handed in at Reception) before 10h00 on the day of departure.
2. Parking is at own risk.
3. All bar and restaurant facilities at the Clubhouse are cash or credit card only.

To help you relax and enjoy your time at Langebaan Country Estate and for future reference we have listed some of the facilities available to you. We hope that you will enjoy your stay with us. If we can do anything to make your stay more enjoyable, or should you need anything, please do not hesitate to contact the team at Langebaan Country Estate.



### General Estate Rules:

1. Guests and visitors are not permitted to bring any pets onto the estate and are required to sign the relevant entry document stating that they will abide by the House Rules, Regulations, any Disclaimers and the Constitution. No vehicles shall enter or leave at any point except at the entrance gates, and shall only be driven on the brick paved estate roads, at a speed not in excess of 30km per hour and at a speed of 15km per hour in Ellefsen.
2. The Estate is an environmentally sensitive area and no person may enter natural fynbos areas, or do anything that detrimentally affects the flora and fauna, or any of the amenities. No unauthorised persons may enter any storage dams.
3. Only members, guests and visitors who have paid and signed in to play golf are permitted on the golf course, and play starts and ends at the Clubhouse.
4. Building construction sites are at all times out of bounds to unauthorised persons, and construction staff must be transported to and from site.
5. No bait permitted on Estate

### House Rules:

1. The Lodge or Golf Suite is to be used for accommodation only for the number of persons specified in your reservation.
2. It is not permitted to hang washing or towels over balconies or out of windows, or to drape it over garden furniture.
3. Please keep fellow residents in mind regarding the volume of the radio and TV; do not create excessive or unnecessary noise.
4. No smoking is allowed in the Lodge or Golf Suite, and we would appreciate your thoughtful disposal of cigarette litter outside the accommodation.
5. Please do not litter.
6. Please park cars in the allocated garage or parking bay per unit. There are extra parking bays available for extra cars. Do not park on the plants or grass.
7. Please adhere to the speed limits on the estate.
8. No pets are allowed.
9. Limited DSTV channels available in addition to local stations.
10. Please refrain from walking on the golf course, use the road provided to the clubhouse. This is for your own safety.

### Pool Area Rules:

1. Children are not allowed in the pool area unless accompanied by an adult.
2. No alcohol or glass bottles are allowed in the pool area.
3. Do not walk through the plants. Walk on the paved areas at all times.







## GENERAL INFORMATION

### A. ORGANISATION

The Organizer of the Championships is the South African Shore Angling Association.

#### Tournament Director and contact person:

Frans Claassen, address: PO Box 1320, Gansbaai, 7220, South Africa  
Tel: 0027 28 384 1333; Fax: 0027 28 384 1333; Mobile: 0027 83 546 7474

*E-mail:* [sasaasec@telkomsa.net](mailto:sasaasec@telkomsa.net)

*Web:* [www.sasaa.co.za](http://www.sasaa.co.za)

### B. APPROACHES TO THE ORGANIZING PLACE LANGEBAAN

#### 1. By Road:

Drive on R27 road from Cape Town towards Veldrif.  
Turn left onto the Oosterwal road into Langebaan.  
Co-ordinates are: 33°6'14.96"S: 18°1'56.88"E

*Website to visit:* [www.streetmaps.co.za](http://www.streetmaps.co.za)

#### 2. By Air:

LIST OF THE MAJOR AIRLINES THAT SERVE CAPE TOWN INTERNATIONAL AIRPORT.

**Air Mauritius**

**Lufthansa**

**Air Namibia**

**Malaysia Airlines**

**British Airways**

**SAA**

**Delta Airways**

**Singapore Airlines**

**Kenya Airways**

**Virgin Atlantic**

**KLM**

**Emirates**

Cape Town Airport is situated on the Eastern outskirts of the city and 140km's from Langebaan.

From the USA the only direct flights to South Africa are with South African Airways and Delta Airlines. They fly from New York (JFK) and Atlanta to Johannesburg and Cape Town. Alternatively,



there is the choice to fly via an European capital, with one of the European airlines shown in the list above. From Europe there are a wide variety of flights, most of them direct and non stop to either Johannesburg or Cape Town. The above list also shows a number of airlines that offer direct flights from Australia and the Far East.

Airfares, Booking and Tickets...

There are a myriad of booking agents to be found, each one offering you the lowest air fares and best packages. Our experience has been that often the lowest fare was to be found direct from the airline themselves.

General Flight times to South Africa...

On direct international air routes flights from Europe are generally overnight. From the USA there is usually one stop over, but some flights offer multiple stopovers. Below is a fair idea of the duration of flights from a number of major international gateways to South Africa with the relevant flight times.

**LONDON 11 hr 00 min**

**NAIROBI 04 hr 20 min**

**AMSTERDAM 11 hr 00 min**

**HONG KONG 13 hr 15 min**

**FRANKFURT 10 hr 30 min**

**PARIS 10 hr 30 min**

**ZURICH 10 hr 15 min**

**ATHENS 09 hr 30 min**

**LISSABON 09 hr 30 min**

**TEL AVIV 09 hr 10 min**

**SAU PAULO 11 hr 00 min**

**DUBAI 08 hr 20 min**

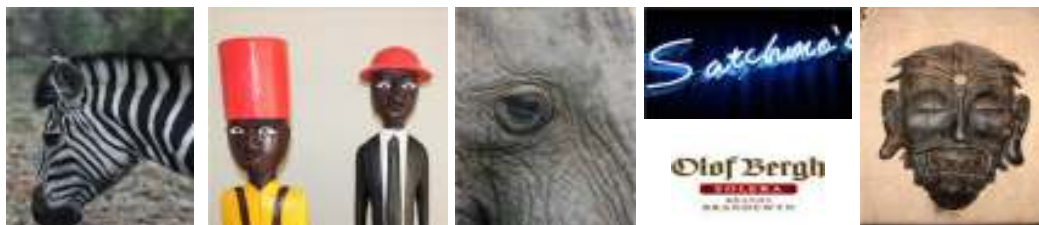
**RIO DE JANEIRO 09 hr 15 min**

**NEW YORK 15 hr 20 min**

**ATLANTA (1 stop) 17 hr 45 min**

**MIAMI 16 hr 00 min**

3. By sea & Railway: Not recommended
4. Transport / Shuttle from Cape Town Airport to Langebaan will be arranged by the organizer.



### **C. INSURANCE**

The Organizer undertakes to insure ALL the participants in the Championships against accidents and death, with the relevant state insurance agency, at its own expense.



**D. MEDICAL CERTIFICATES AND MEDICAL STAFF**

1. Each national organization is accountable for the data entered / supplied for their team and shall provide that all the members of the team produce a medical certificate as a proof of their fitness to take part in the competition
2. A medical certificate for the team will be accepted provided it is stamped by a competent doctor and is written in one of the official languages of C.I.P.S.
3. The Organizer will have medical competent staff available for the duration of the competition
4. Should a national organization fail to comply with 1 and/or 2 above, the Organizer will commission a medical doctor to issue the medical / fitness certificates, at the expense of the competitor(s) or their national organization.

**E. ANTI-DOPING CONTROL**

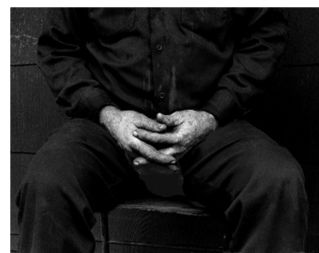
All the participants / competitors partaking in the championships implicitly include the acceptance of ALL the sports anti-doping rules of WADA.

**F. VISAS**

Visas are required for visitors. Contact your nearest South African consular representative.

**G. STATE FLAG AND ANTHEM**

National organizations are responsible for supplying the Organizer with at least one (preferably two) flag of their country, of the prescribed size, as well as a CD with their national anthem in MP3 format.



**H. MEDALS AND OTHER RECOGNITIONS**

The winners will be awarded medals - gold silver and bronze - by FIPS-M, while the Organizer will offer cups and other commemorative awards.



**I. MEANS OF PAYMENT (CURRENCY)**

The currency in use is ZAR, (Zuid Afrika Rand, South African Rand) but payments could be made in other valid convertible currencies (through exchange in banks or exchange offices for Euro), or by American Express, Master, Diners or Visa cards.

**J. PARTICIPATION**

**1. PARTICIPATING FEE PER TEAM**

|  |                       |         |                   |
|--|-----------------------|---------|-------------------|
| ▶  | 5 Competitors         | x 650 € | 3 250-00 €        |
| ▶  | 1 Manager             | x 575 € | 575-00 €          |
| <b>TEAM COST</b> 5 Anglers and 1 Manager |                       |         | <b>3 825-00 €</b> |
| ▶  | 1 reserve / captain   | x 575 € | 575-00 €          |
| ▶  | Individual competitor |         | 650-00 €          |

**INCLUDED IN THE PARTICIPATION FEE**

- a. hotel / house accommodation in double rooms, full board (breakfast, lunch, dinner) starting with dinner on Saturday, 7th November, concluding with breakfast on Saturday, 14th November
- b. transport to / from the competition sites
- c. cultural / entertainment programme
- d. gala dinner / closing ceremony (banquet)
- e. baits for competition and official practice
- f. FIPS/M starting fee and CIPS organizing fees

**Note:** Cost for additional bait for own practice days will be available at:

|                           |                 |
|---------------------------|-----------------|
| Pilchards                 | 2.50 € /kg      |
| Chokka / Squid / Calamari | 13.50 € /kg     |
| Mullet                    | 6.50 € /10 each |

**2. CAPTAIN / NATIONAL OFFICIAL / TEAM LEADER**

Individual fee per member 575-00 €  
The fee per individual member includes all listed from a,b,c & d above.

**3. OTHER PERSONS**

(Family, friends, etc.) 575-00 €

The fee per individual family / friend includes :  
The fee per individual family / friends includes all listed from a,b,c & d above



#### 4. CONDITIONS OF CANCELATION

- ▶ Up to 60 days of departure: no expenses will be retained within the limit where partial cancellation not exceeds 10 % of numbers. Beyond that, 15 % of expenses per cancelled competitor.
- ▶ Between 60 and 30 days: 25 % of the diffence of the total amount file induced by partial cancellation.
- ▶ Between 29 and 8 days: 50 % of the diffence of the total amount file induced by partial cancellation.
- ▶ Between 7 days and the departure date: 100 % of the diffence of the total amount file induced by partial cancellation.

#### SASAA BANK DETAILS:

SOUTH AFRICAN SHORE ANGLING ASSOCIATION  
FIRST NATIONAL BANK  
NEWTON PARK  
BRANCH CODE: 261050  
ACCOUNT No. 534 100 361 57  
FNB SWIFT No. (FIRNZAJJ)

(FIRST NATIONAL BANK, Newton Park, PO Box 7028, 293 Cape Road Newton Park, Port Elizabeth, 6055, Eastern Cape Province, South Africa)

BANK CHARGES WILL BE FOR THE ACCOUNT OF PARTICIPATING NATION!!!

#### 5. BAITS

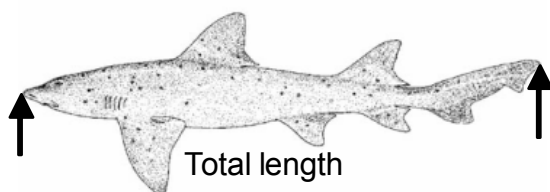
The following **3** baits will be supplied per day:

- ▶ Mullet 10 number
- ▶ Sardine 1 kg
- ▶ Chokka / Squid / Calamari 500 gram

#### 6. FISH SPECIE

Many species of fish are caught in the area but the predominant species are:

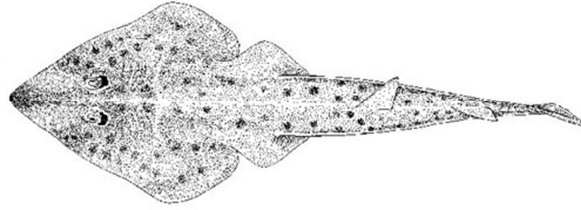
##### Smooth Hound



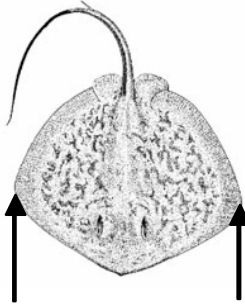




**Guitar Fish**

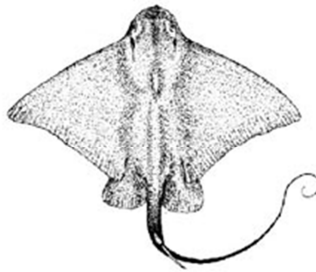


**Blue Ray**

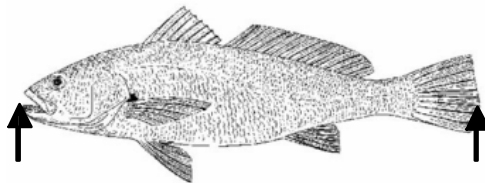


Wingspan

**Eagle Ray**



**Cob**



Total length

**St Josephs**

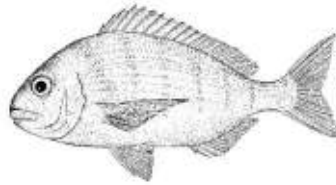


**Spear Nose Skates**

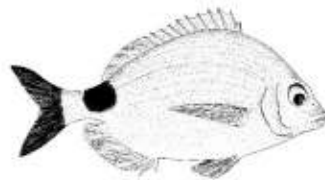




**White Stump Nose**



**Blacktail**



|                              |                                 |
|------------------------------|---------------------------------|
| <b>Dogfish (Striped)</b>     | <b>Poroderma africanum</b>      |
| <b>Gully (Spotted)</b>       | <b>Triakis megalopterus</b>     |
| <b>Hound (Smooth)</b>        | <b>Mustelus mustelus</b>        |
| <b>Blueray</b>               | <b>Dasyatis chrysonota</b>      |
| <b>Duckbill ray</b>          | <b>Pteromylaeus bovinus</b>     |
| <b>Eagle ray</b>             | <b>Myliobatis aquila</b>        |
| <b>Electric (marbled)</b>    | <b>Torpedo sinuspersici</b>     |
| <b>Guitarfish (Lesser)</b>   | <b>Rhinobatos annulatus</b>     |
| <b>Spearnose</b>             | <b>Raja alba</b>                |
| <b>Stingray (Short-tail)</b> | <b>Dasyastis brevicaudata</b>   |
| <b>Blacktail</b>             | <b>Diplodus sargus capensis</b> |
| <b>Hottentot</b>             | <b>Pachymetopon blochii</b>     |
| <b>Kob (Dusky)</b>           | <b>Argyrosomus sp.</b>          |
| <b>Leervis</b>               | <b>Lichia amia</b>              |
| <b>Mullet (Striped)</b>      | <b>Liza tricuspidens</b>        |
| <b>Steenbras (Wescoast)</b>  | <b>Lithognathus aureti</b>      |
| <b>Stumpnose (White)</b>     | <b>Rhabdosargus globiceps</b>   |



- 6.1 Minimum size of **15cm** as per FIPS/M rules
- 6.2 Shad and Galjoen are out of season and will not score points.
- 6.3 Only stewards / marshals will be permitted to remove hooks from fish with poisonous spikes.
- 6.4 The fish will be measured by a steward for the classification. The length and species of the fish will be recorded on the competitors match card, a weight for length conversion system will be used by the organisation. A copy of the conversion table will be supplied to each captain at the first meeting.

## 7. FISHING TACKLE SHOP

There are three (3) fully equipped tackle shops in Langebaan or within 20 km. The Organizers will ensure the shops have appropriate tackle in stock.

### SPECIAL ARRANGMENTS

Should a team wish to arrive earlier for training/practice or to stay after the official competition the Organizer will provide at the following rates:

|   |         |
|---|---------|
| daily <b>FULL</b> board, per person sharing per day,<br>(Transport to & from practice fishing venue included) | 65-00 € |
| daily <b>FULL</b> board, per person <b>not</b> sharing per day  | 80-00 € |
| daily tax and insurance, per person   | 2-50 €  |

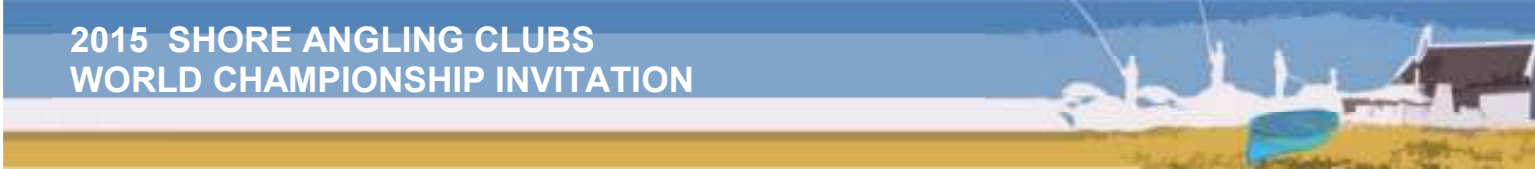
## 8. BRING A BOTTEL, (500ml) OF SEA WATER FROM YOUR NATION



## 9. PAYMENTS

**Each federation shall make payments**

- ▶ Within **8 (eight) days** following the submission of FINAL APPLICATION, in line with the payment instructions supplied.



**10. EXPRESSION OF INTEREST**

Nations who are considering participating in this Championship are requested to complete this form and e-mail or fax to the number or address below:

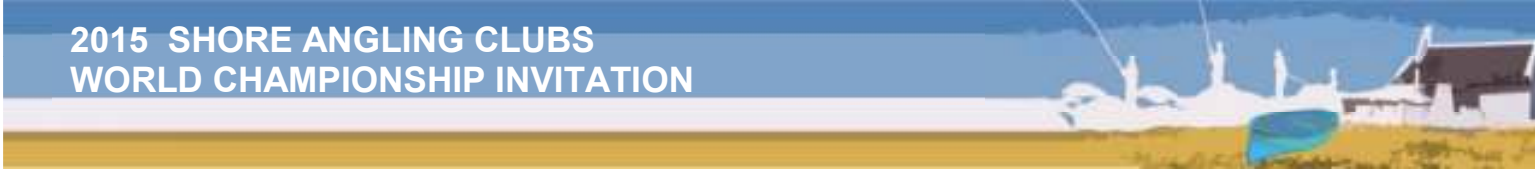
**You are under no obligation. Please complete.**

**EXPRESSION OF INTEREST**

| <b>NATION</b> | <b>CLUB NAME</b> | <b>NAME</b> | <b>SURNAME</b> | <b>E-MAIL</b>  | <b>PHONE No,</b> |
|---------------|------------------|-------------|----------------|--|------------------|
| SOUTH AFRICA  | DROSTDY          | FRANS       | CLAASSEN       | <a href="mailto:sasaasec@telkomsa.net">sasaasec@telkomsa.net</a> | +27 83 546 7474  |
|               |                  |             |                |  |                  |

*FAX to:* 0027 28 384 1333  
*E-mail to:* [sasaasec@telkomsa.net](mailto:sasaasec@telkomsa.net)





FICHA DE INSCRUÇAI / FICHE D'INSCRIPTION REGISTRATION FORM

Devolver antez de / Return Before **15/07/2015**

Country / Pays / Nation: .....

Club Name: .....

|   | Prénom /Name | Nom / Surname | Cost / Coût (€) |
|---|--------------|---------------|-----------------|
| 1 |              |               | 650 €           |
| 2 |              |               | 650 €           |
| 3 |              |               | 650 €           |
| 4 |              |               | 650 €           |
| 5 |              |               | 650 €           |
| R |              |               | 650 €           |

Capitaine d'Équipe et Délégué / Team Manager, Captain, Representative

| Position                       | Prénom /Name | Nom / Surname | Cost / Coût (€) |
|--------------------------------|--------------|---------------|-----------------|
|                                |              |               |                 |
|                                |              |               |                 |
| <b>Total Cost / Coût Total</b> |              |               | .....€          |

**FAX to:** 0027 28 384 1333  
**E-mail to:** [sasaasec@telkomsa.net](mailto:sasaasec@telkomsa.net)

Total payments must be made before **15 July 2015** to SOUTH AFRICAN SHORE ANGLING ASSOCIATION, with a copy of the bank transfer by e-mail to Frans Claassen at [sasaasec@telkomsa.net](mailto:sasaasec@telkomsa.net). SOUTH AFRICAN SHORE ANGLING ASSOCIATION, FIRST NATIONAL BANK , NEWTON PARK, BRANCH CODE: 261050, ACCOUNT No. 534 100 361 57, FNB SWIFT No. **(FIRNZAJJ)** (FIRST NATIONAL BANK, Newton Park, PO Box 7028, 293 Cape Road Newton Park, Port Elizabeth, 6055, Eastern Cape Province, South Africa)

Sianed / Siané .....: ..... / ..... / 2015



FICHE D'INSCRIPTION

REGISTRATION FORM - ACOMPANHANTES

Return Before /Remettre avant **15/07/2015**

Country / Pays / Nation : .....

Club name: .....

|    | Prénom /Name | Nom / Surname           | Cost / Coût (€) |
|----|--------------|-------------------------|-----------------|
| 1  |              |                         |                 |
| 2  |              |                         |                 |
| 3  |              |                         |                 |
| 4  |              |                         |                 |
| 5  |              |                         |                 |
| 6  |              |                         |                 |
| 7  |              |                         |                 |
| 8  |              |                         |                 |
| 9  |              |                         |                 |
| 10 |              |                         |                 |
| 11 |              |                         |                 |
|    |              | Total Cost / Coût Total | .....€          |

**FAX to:** 0027 28 384 1333  
**E-mail to:** [sasaasec@telkomsa.net](mailto:sasaasec@telkomsa.net)

Total payments must be made before **15 July 2015** to SOUTH AFRICAN SHORE ANGLING ASSOCIATION, with a copy of the bank transfer by e-mail to Frans Claassen at [sasaasec@telkomsa.net](mailto:sasaasec@telkomsa.net). SOUTH AFRICAN SHORE ANGLING ASSOCIATION, FIRST NATIONAL BANK , NEWTON PARK, BRANCH CODE: 261050, ACCOUNT No. 534 100 361 57, FNB SWIFT No. **(FIRNZAJJ)** (FIRST NATIONAL BANK, Newton Park, PO Box 7028, 293 Cape Road Newton Park, Port Elizabeth, 6055, Eastern Cape Province, South Africa)



TEAM : \_\_\_\_\_

## TRAVEL PLAN

| NAMES | ARRIVE : CAPE TOWN |      |      |                                    |    | DEPART FROM CAPE TOWN |      |      |
|-------|--------------------|------|------|------------------------------------|----|-----------------------|------|------|
|       | FLIGHT No          | DATE | TIME | DO YOU NEED TRANSPORT TO LANGEBAAN |    | FLIGHT No             | DATE | TIME |
|       |                    |      |      | YES                                | NO |                       |      |      |
| 1     |                    |      |      |                                    |    |                       |      |      |
| 2     |                    |      |      |                                    |    |                       |      |      |
| 3     |                    |      |      |                                    |    |                       |      |      |
| 4     |                    |      |      |                                    |    |                       |      |      |
| 5     |                    |      |      |                                    |    |                       |      |      |
| 6     |                    |      |      |                                    |    |                       |      |      |
| 7     |                    |      |      |                                    |    |                       |      |      |
| 8     |                    |      |      |                                    |    |                       |      |      |
| 9     |                    |      |      |                                    |    |                       |      |      |
| 10    |                    |      |      |                                    |    |                       |      |      |
| 11    |                    |      |      |                                    |    |                       |      |      |
| 12    |                    |      |      |                                    |    |                       |      |      |
| 13    |                    |      |      |                                    |    |                       |      |      |
| 14    |                    |      |      |                                    |    |                       |      |      |
| 15    |                    |      |      |                                    |    |                       |      |      |

*FAX to:* 0027 28 384 1333  
*E-mail to:* [sasaasec@telkomsa.net](mailto:sasaasec@telkomsa.net)



## TOURNAMENT ANGLING ON THE WEST COAST

### Introduction

Tournament angling on the West Coast is different, VERY different! It is simply like no other area in South Africa. The water is shallow, VERY shallow, usually less than a meter deep. REALLY flat, there is simply no swell.

Because of the cold Benguela current the water is normally very cold except in the protected bays such as St Helena Bay and Saldanha Bay where the sun warms the water, as it is so shallow in the case of St Helena bay and because of the Langebaan lagoon in the case of the Saldanha Bay area. The result is that all the angling is done in these two bays. In both these bays the water can be as warm as 24° C and so most of the fish are concentrated there.

### Blue Water Bay to Saldanha Bay

This area is exceptionally shallow and normally crystal clear, however don't let that put you off as the Lesser Guitar fish and bull rays still feed even in the clear water. You can actually stalk them and cast a bait at them.

### Bergriver Mouth to Dwarskersbos and Varkenvlei

The road to Dwarskersbos runs parallel to the coast, making it very accessible by any vehicle. The first entry point is at *the beacon*. From this point it is possible to follow the coast all the way to the *swartbossie*, a distance of two to three kilometers. Because of the track being a 4x4 track it is fished less often than the rest of the area, but often produces good fish, especially bull rays.

The most popular area fished is from the swartbossie to the *Lapa*. This area is heavily fished by local anglers, fishing for cob and galjoen, [every year a few giant cob are caught by anglers fishing for galjoen with white mussel] For the competitive angler this can be the most productive area and has been known to produce great numbers of fish.

*The Lapa* the fish are generally taken on a long cast and because of this it usually fishes better on a low tide. Again this area has quite a lot of reef and it is important to know where they are as again the fish seem to swim along these rocky areas.

From the *Lapa to Dwarskersbos* there are numerous reefs, which open on the low tide. This whole area [+/- 3kms] is a good area for all the flat fish, especially blue rays.

The water along this area is normally brown and flat and because of this the predominant bait is sardine and mullet

### Langebaan

This is the area that produces the most Smooth hound fish. It also produces Lesser Guitar fish [most of the Lesser Guitar fish are the round nose specie which grow slightly larger than the standard Lesser Guitar fish]. Bull Rays and the odd Kob is also caught



In Langebaan first important spot is the *Spit in Langebaan*, which is a prime spot for catching smooth hounds. It fishes best from two hours before low tide till two hours after low tide, as this is when the current is slack.

Because of the fish being targeted, squid is a very important bait in this area. The smooth hounds here seem to prefer squid above any other bait. Mullet are the second most important bait, especially a slightly larger mullet so that a reasonable bait can be made of the head. Sardine is important for Lesser Guitar Fish bait. The bait allocation for this area will be Squid, mullet and sardine.

## APPROPRIATE TACKLE

Because of the size of the fish being targeted an angler will need two sets of rods and reels. When fishing for Smooth hounds an appropriate rod would be 4m and a 6 to 8 ounce tip. When fishing for the smaller flat fish a 3.5m and a 4 to 6 ounce tip would be better. The problem of two rods can be overcome by having one rod with two different tips.

The reels that are mostly used are the Shimano or Daiwa 20 or 30. It would be appropriate to have a reel filled with a good quality nylon with a diameter of 0.50mm and one with 0.45 mm. for shock leaders a range from 0.65 to 1.00mm would be suggested.

For terminal tackle sinkers should range from simple teardrop sinkers 75gr to 175gr. When there is current in the Langebaan area the breakaway with wires in them will be needed. Here only heavy sinkers would be needed 150 to 175grs. The hook range would be from 3/0 to 6/0 for the lighter fishing, while 7<sup>o</sup> to 10<sup>o</sup> will be needed for the heavier fishing.

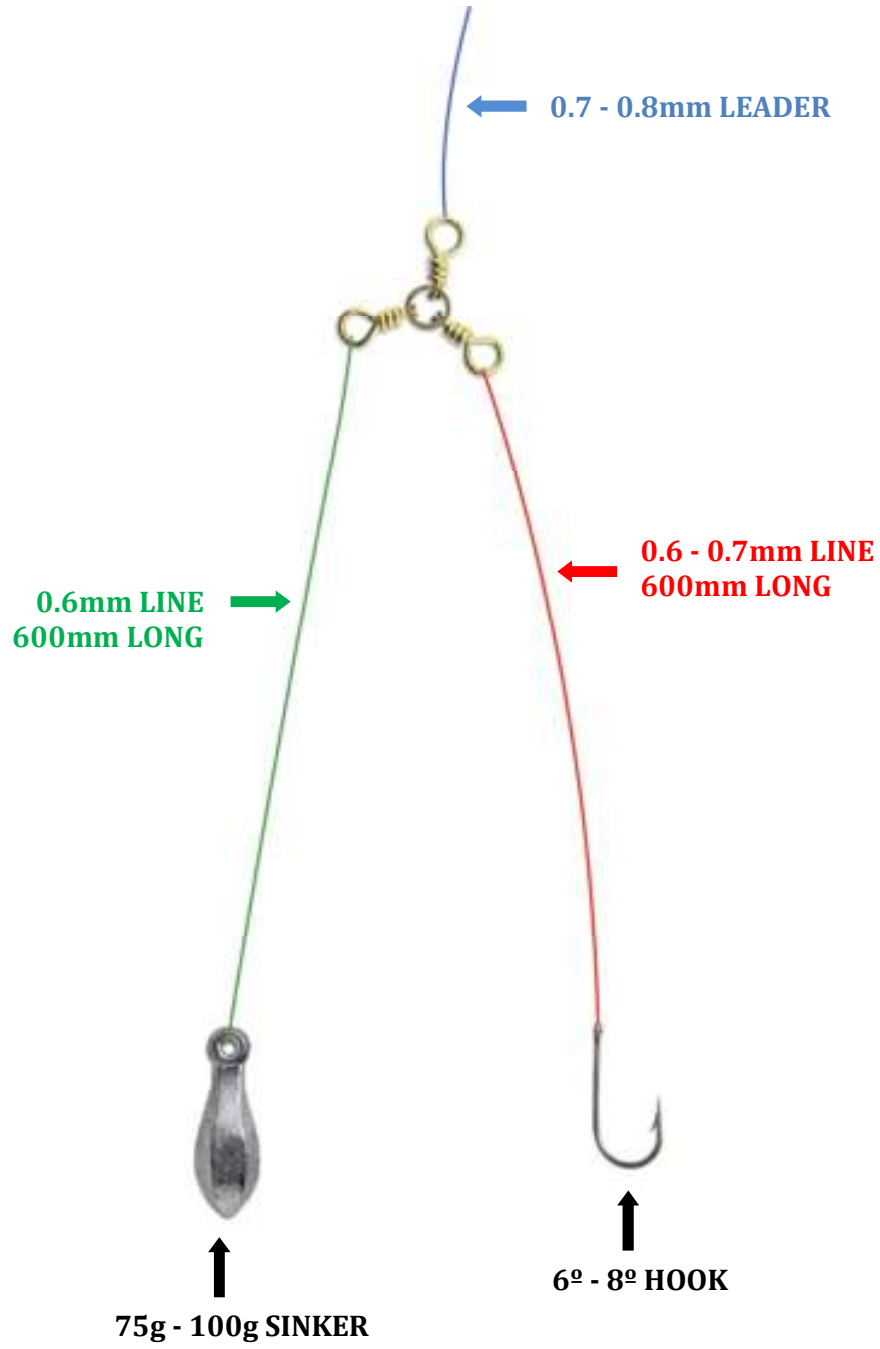
It would not be advisable to use more than two hooks at any one time as the fish are of such a size that they may break each other off even when fishing with two hooks this happens.



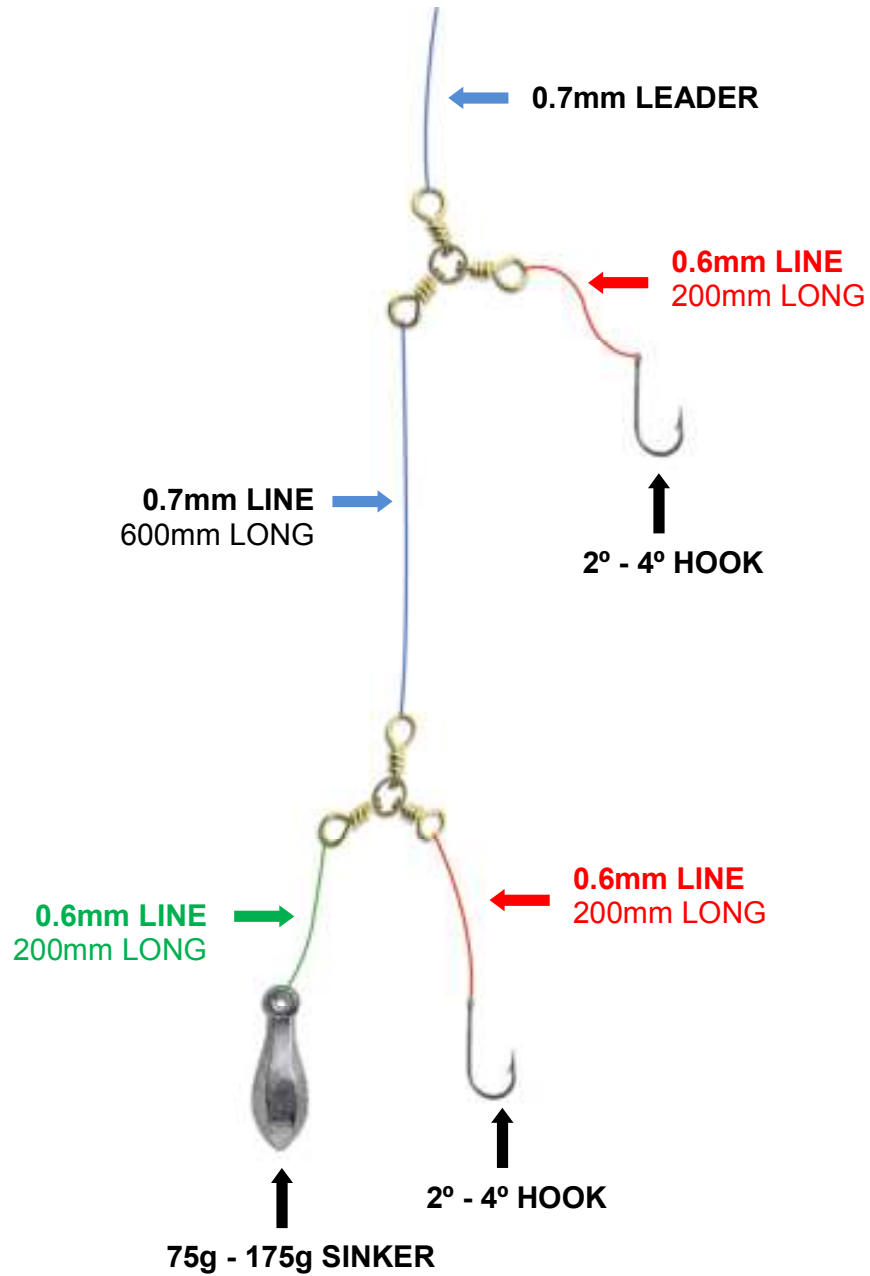


**TRADITIONAL SETTING / TRACE USED**

**TRACE 1**

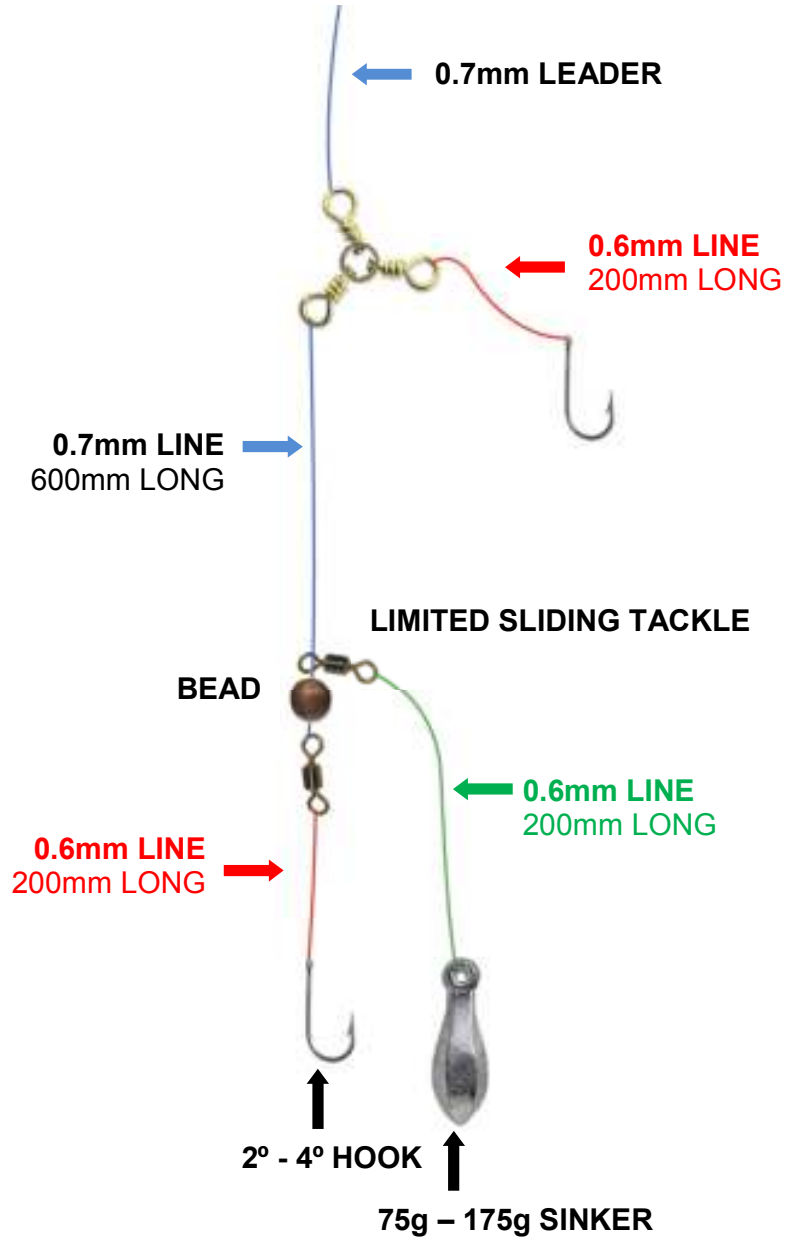


TRACE 2





TRACE 3



## CONSERVATION

South African angling is **VERY** conservation conscious and will **insist** that all fish be returned to the water as soon as possible with as little trauma as possible. We also allow no gaffing of fish as all the fish here can easily be landed without being gaffed. The use of circle hooks is highly recommended but if a hook is swallowed by a fish the trace must immediately be cut. We also insist that no rays be turned on their backs when removing hooks as this can cause them permanent damage.

## WARNING

Some of our fish have spikes and can cause ugly wounds. The most dangerous are the barbel as their spikes have venom which can cause extreme pain. The blue rays and the duckbill rays have a spike on their tail which can also cause ugly wounds. The St Josephs have a spike on their backs which should be handled with caution.

In **Conclusion** the West Coast looks forward to welcoming all competitive anglers to our waters, may you all enjoy your stay and come back again as this is probably the last frontier of angling in South Africa.

## BAITS

**THE BELLY OF A SARDINE**

1. The belly part is cut out with a sharp knife.
2. Make a slit on both sides of the backbone and remove it. The bait is now hookless, leaving the point of the hook protruding from the slit end. Finally the bait is evenly secured with this cotton.



**Remark:** This is a very effective bait, as the strong flavour in the stomach is set free.

Best in the water to attract fish quickly. Furthermore, the white belly ("sticker") is very likely to draw the attention of predators.

**SARDINE FILLETS**

After having removed the head and tail of the sardine, cut out the two fillets on both sides of the backbone. Cut through the flesh of each fillet in the length, stopping before cutting through the skin. Flank the first fillet at its broad side so that the hook protrudes from the flesh side, tuck the bait along the length slit around the hook shank and secure it. The second fillet is now placed on the first one and secured. Separate the two pieces of the sardine over the bait for extra flavour and you will end up with a most tempting bait for amongst others lob, shoal and even white steenbras.



**FILLETED SARDINE**

The photo shows a sardine that has been filleted from the top of the back, like a steak. The hook, with hook rubber around the shank, is inserted at the skin side. The filleted sardine is now wrapped around the hook shank as shown and secured.



1. Cut a strip of chokka as indicated. 2. Thoroughly soften the part above the broken line. 3. Insert the hook at the dot and secure the softened part to the hook shank. The completed shokko bait can be seen at the bottom of the page.



**Remark:** With this bait as a basic, you can also try the following variations, which may pleasantly surprise you:

- Add one or two sandworms to the basic bait.
- Slide a piece of bloodworm, which has been turned inside out, down your hook trace. Pull it over the bait bait (like a sleeve) and secure with this cotton thread. This juicy bloodworm, with the two chokka "legs" hanging free, is one of the most tempting baits to offer a white steenbras.



An angler showing one of many white steenbras caught on a shokko bait.



## FISHING AREAS

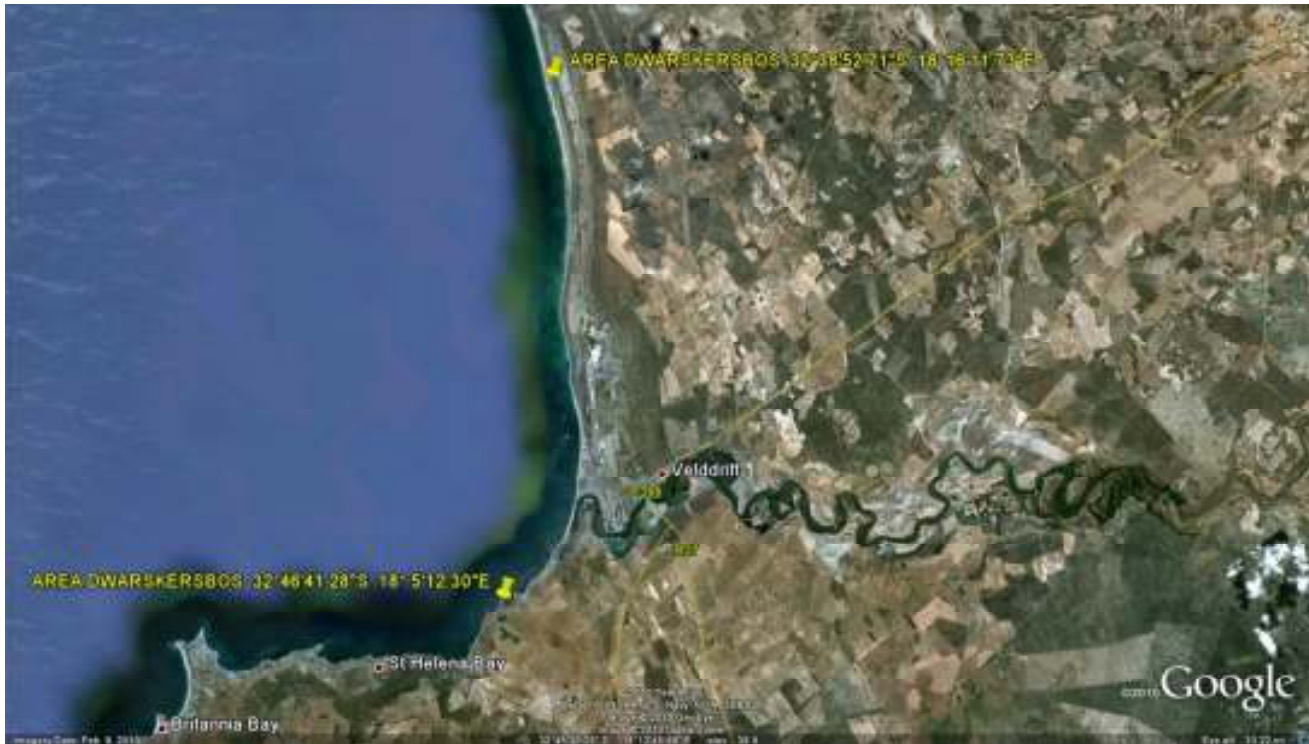
Langebaan to Blue Water Bay to Saldanha Bay







Dwarskersbos to Lapa to Bergriver mouth



**ESQUIRE**  
Construction Solutions

*Esquire: "A Nobleman who, in training for knighthood, acts as an attendant to a Knight to serve his King."*

Pierre du Preez  
072 177 5419  
pdupreez.contracts@gmail.com

Professional Project Management  
Earthworks  
Sewer, Storm water and Water networks  
Electrical, Data and Telkom Ducting networks  
Road Construction  
Kerbing and Channeling  
Sidewalks  
Landscaping, contouring

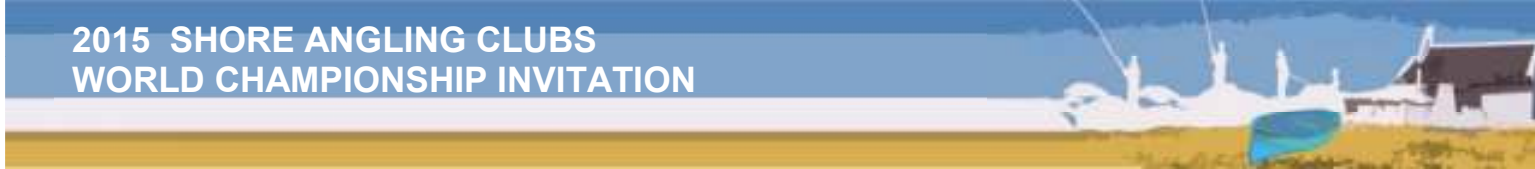
**WESREM**  
Plant Hire (Pty) Ltd

*"Excellence in Construction Services"*

Pierre du Preez  
072 177 5419  
pdupreez.contracts@gmail.com

Justin Maans  
082 562 9343  
jmaans.office@gmail.com

Shemon Carelse  
082 220 3237  
scarelse.office@gmail.com



PREFERRED TRANSPORT CONTRACTOR

**Future Coaches Cape**  
**Louwrens Smit**

Emergency 24/7: 086 011 1419  
E-mail: [louwrens@futurecoachescape.co.za](mailto:louwrens@futurecoachescape.co.za)  
Website: [www.futurecoachescape.co.za](http://www.futurecoachescape.co.za)



**Fleet Information**

**0860 11 14 19**

[sales@futurecoachescape.co.za](mailto:sales@futurecoachescape.co.za) | [www.futurecoachescape.co.za](http://www.futurecoachescape.co.za)

**7 Seater Luxury Hyundai**

Star Rating: ★★☆☆



**Features Include:**

- 3 x 2 Seat Configuration
- Double Door
- Air Conditioning
- Reclining Seats
- Radio/CD/MP3
- DVD System
- No Parcel Racks (Inside)
- Trailer for Luggage
- No Luggage Rims (Outside)
- No Toilet
- Seatbelts
- R50 Million Passenger Liability
- Fire Extinguisher
- Tracking

**13 Seater Luxury Toyota Quantum**

Star Rating: ★★☆☆



**Features Include:**

- 2 x 1 Seat Configuration
- Air Conditioning
- Reclining Seats
- Radio/CD/MP3
- No Parcel Racks (Inside)
- Trailer for Luggage
- No Luggage Rims (Outside)
- No Toilet
- Seatbelts
- R50 Million Passenger Liability
- Fire Extinguisher
- Tracking

**16-19 Seater Luxury Mercedes Sprinter / VW Crafter**

Star Rating: ★★☆☆



**Features Include:**

- 2 x 1 Seat Configuration
- Air Conditioning
- Cloth/Leather Reclining Seats
- Radio/CD/MP3
- DVD System
- Parcel Racks (Inside)
- Trailer for Luggage
- No Luggage Rims (Outside)
- No Toilet
- Small Fridge
- Seatbelts
- R20 Million Passenger Liability
- Fire Extinguisher
- Tracking







Most Highly  
Recommended  
Operator  
- Lonely Planet

**GREAT WHITE SHARK TOURS WITH BRIAN MCFARLANE**  
**GREAT WHITE SHARK SURFACE VIEWING AND CAGE DIVING TRIPS**

**TEL: +27 (0)28 384 1418**  
**CELL: +27 (0)83 300 2138**  
**WWW.SHARKCAGEDIVING.NET**







# OVERSTRAND MAKELAARS

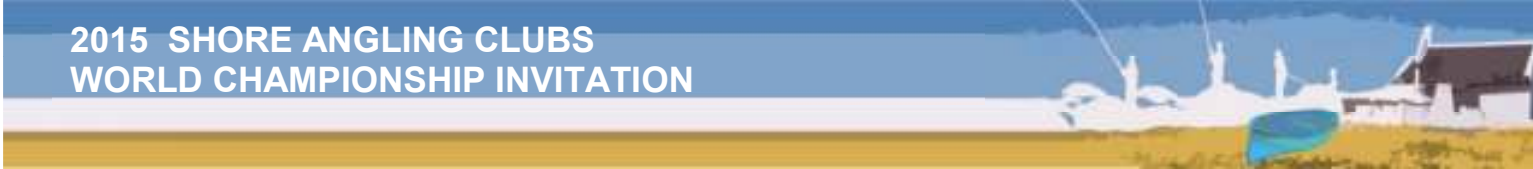
Financial Service Provider No: 19364

1 Main Road, PO Box 1320, Gans Bay 7220  
Email: [omakelaars@telkomsa.net](mailto:omakelaars@telkomsa.net)

Tel / Fax: 028 384 1333  
Cell: 083 546 7474



CLUB MYKONOS  
LANGEBAAAN



## **THE PREFERRED COMMUNICATION PROVIDER**



**vodacom**

**Vodacom Shop Tygervalley Group**